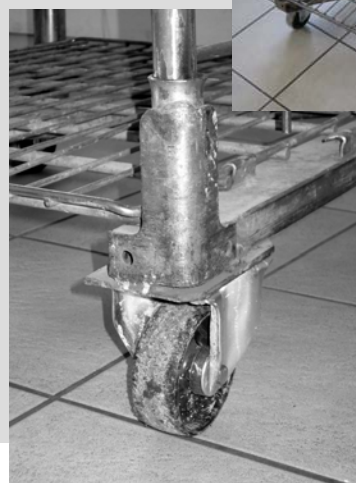
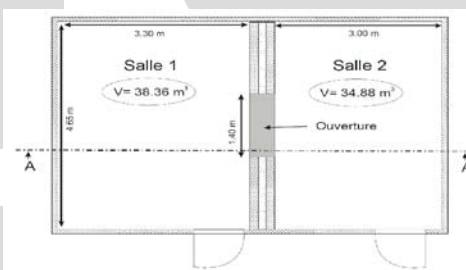
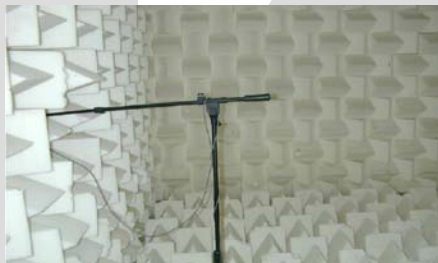
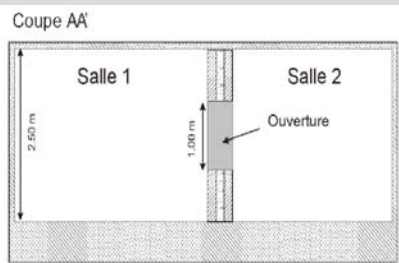
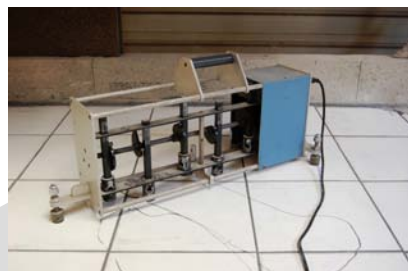




*Don't change your setup,
just improve the way you are using it !*



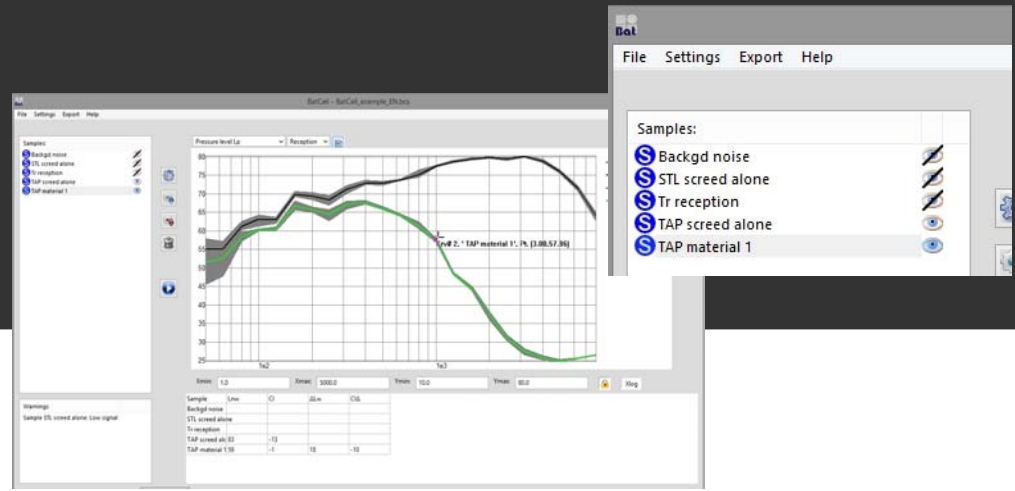
BatCell is an acquisition software to manage **building acoustics standardized measurements**

For **in-laboratory** and **in-situ** measurements.

Air borne, structure borne and rolling sounds !

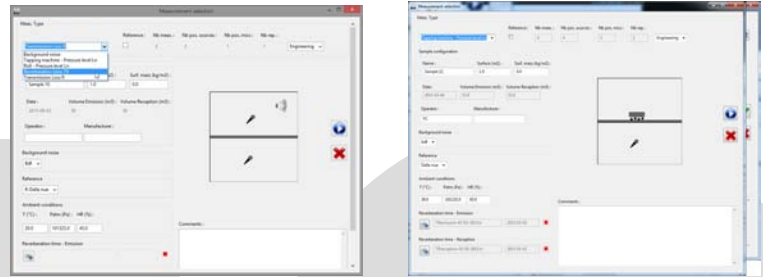
It will be asked for by technicians and required by engineers.

Prepare to be MATELYS approved !



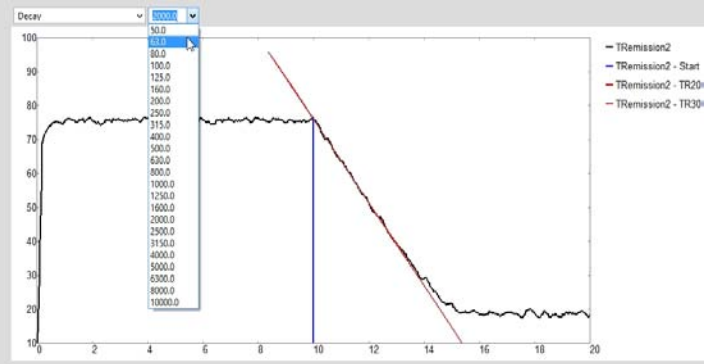
Various test conditions

- complying ISO 10140 & ISO 354 series
- air borne **diffuse** sound field
- **tapping** machine
- **rolling** noise
- **background** noise
- **your** sound source !



For in-laboratory measurements

- sound **pressure level**, sending & receiving rooms
- **reverberation** time, sending & receiving rooms
- **decay** level for each tested frequency with computed Tr(20 dB) and Tr(30 dB)
- **background** noise level
- relative sound **attenuation**
- sound **transmission** loss
- ISO 717-1 & -2 single rating numbers



Key features

- **engineering, expert** and **custom** procedures
- individual microphone **calibration**
- **ICP** and power conditioned microphones
- guided **measurement** procedure
- **automated standardized PDF** report generation

Additional features

- **third octave** band computation
- mean value and **dispersion** envelope
- various **source signals**
- handles temperature, pressure and humidity conditions

Tapping machine - Pressure level Ln

Background noise

Tapping machine - Pressure level Ln

Roll - Pressure level Ln

Reverberation time TR

Transmission Loss R

Niveau de pression acoustique du bruit de choc
Mesurages en laboratoire de l'isolat

Fabricant: AA
Client: CC
Element d'essai: monté par: BB
Description de l'installation, de l'élément et de la disposition d'essai:
tatastatastata
bokebebebebe

Alté S de l'élément d'essai: 1.0 m²
Masse surfacique: 100.0 kg/m²
Température de l'air dans les salles d'essai: 20.0 °C
Humidité relative dans les salles d'essai: 45.0 %
Pression statique: 0.101 MPa
Volume de la salle de réception: 52.0 m³

Fréquence f (Hz)	L (dB)
50	51.7
63	52.4
80	60.1
100	61.0
125	61.1
160	68.4
200	67.4
250	68.8
315	68.7
400	70.6
500	69.9
630	71.2
800	72.0
1000	75.0
1250	75.2
1600	77.4
2000	77.5
2500	77.1
3150	78.0
4000	77.0
5000	74.2

L_{eq} (C) = 63 (-13) dB

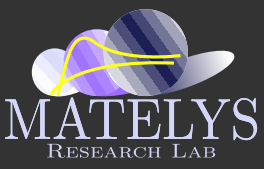
Évaluation basée sur les résultats des mesurages en laboratoire obtenus par une méthode expertisée.

N° du rapport d'essai: R2015
Date: 2015-03-06

Nom de l'organisme d'essai: DD
Signature:

Généré avec: **Bat**

MATELYS also provides **microphones, calibrators, sound level meters, sound sources ...**



BatCell is a software product designed and developed by MATELYS-Research Lab

<http://batcell.matelys.com/>
batcell@matelys.com

MATELYS - Research Lab
7 rue des Maraîchers, Bât B
F-69120 Vaulx-en-Velin
FRANCE

Phone: +33 972 50 93 16
Fax: +33 972 50 93 15
Email: contact@matelys.com
Web: <http://www.matelys.com/>